

REGULATORS

DE IULIIS CARLO & ALFONSO SPA
VIA XXV LUGLIO 116 - 84013 CAVA DE' TIRRENI, (SA) ITALY
PHONE: +39-089 463844
EMAIL: U.COMMERCIALE@DEIULIIS.IT
WEBSITE: WWW.DEIULIIS.IT

 **DE IULIIS C.&A.**
PAPER MACHINERY

REGULATORS RR SERIES

The RR Regulator series, is designed to be used in all section of the paper machine when it is necessary to control the side sliding of wires and felts.

The production of this equipment has been designed with the aim of optimizing the production process: each regulator is studied and positioned to maximize the efficiency of the system.

The main fundamental parameters, in order to ensure precise and quick adjustment have been taken into consideration:

- The position of application in the paper machine
- The choice of the best material
- The necessary precision of control / adjustment
- The width of the paper machine

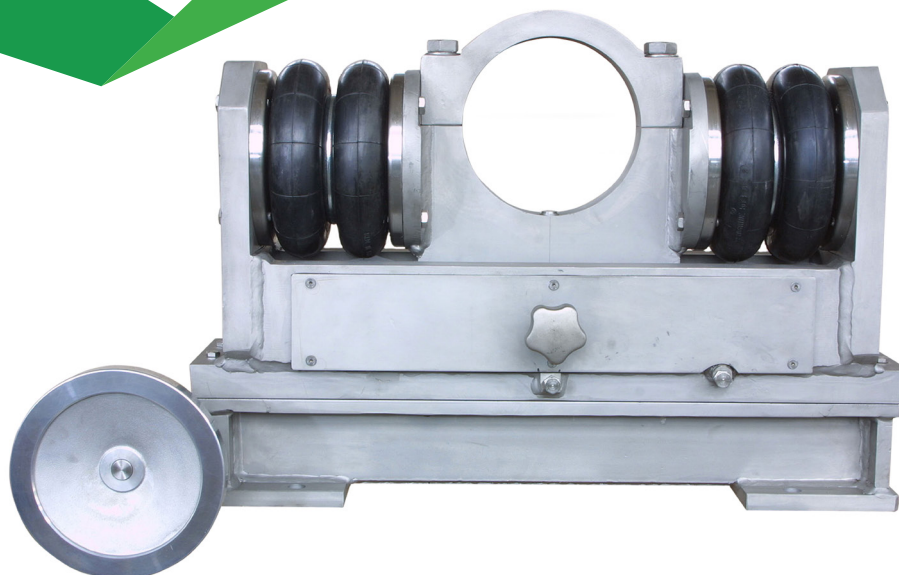
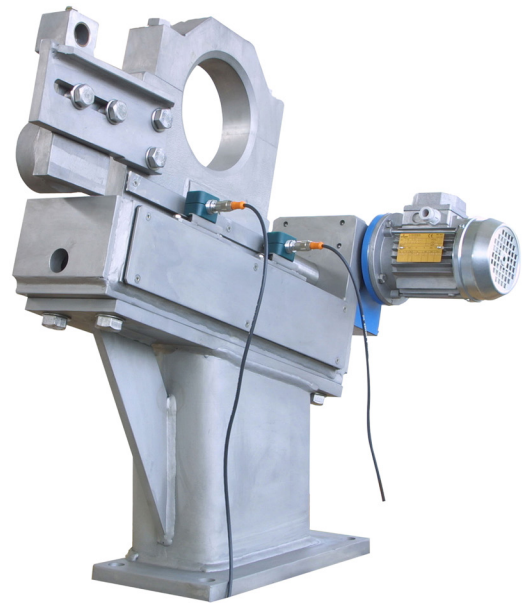
Material

Design

- symmetrical design
- asymmetrical design (to allow assembly of the doctor on the regulator roll),

Material

- stainless steel (fourdrinier machine or press section)
- carbon steel (dry ends)



Temperature resistance

- Standard Type carbon steel(Up to 110°C)
- High temperature type carbon steel (Up to 150°C)

Misalignment Device

For any equipment it is possible to insert mechanical motorized misalignment device of the regulator roll, which through a screw jack, provide a measurement of the fixed roll misalignment by remote control panel.

The misalignment Device can be installed:

- Separately (on the tender side)
- Integrated into the regulator (easier and faster maintenance)

