

## Plastic recycling systems



Storing



Dewiring



Cutting



Transporting



Shredding



Screening

# Crosswire Extractor CWE-1200

Our unique solution for dewiring of  
crosswise wired mixed plastic bales

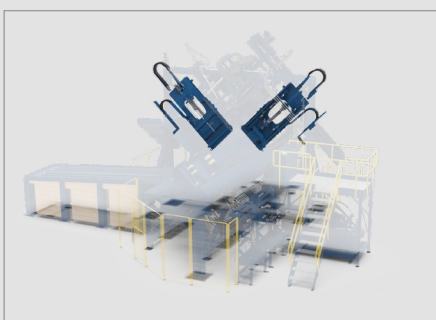


Capacity  
**80 bales/h**  
(up to 120 to/h)

Bale weight  
**max.**  
**1500 kg**

Dewiring efficiency  
**min. 90 %**

Plant availability  
**min. 99 %**



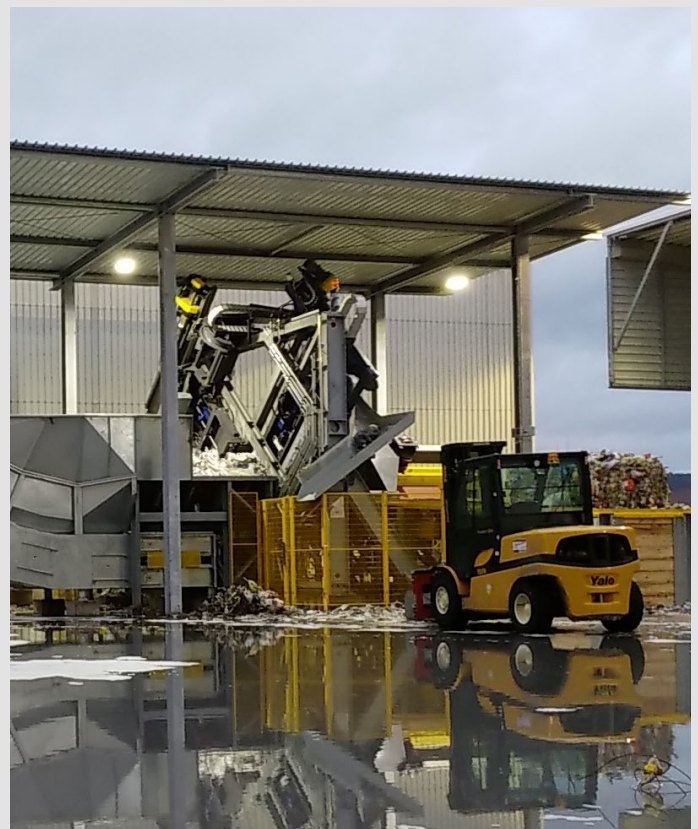
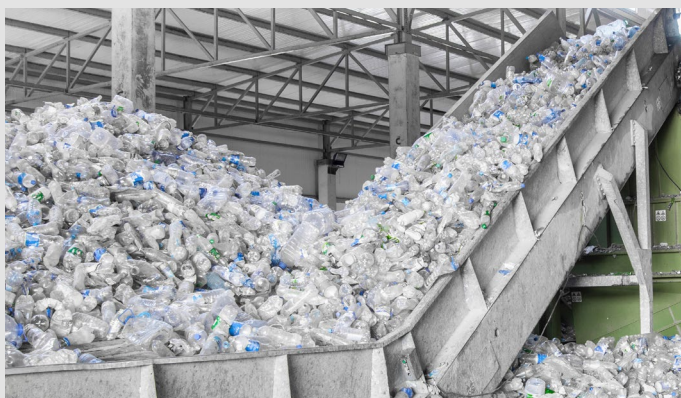
# Innovation meets responsibility

## FMW creates highly efficient sustainable solutions for plastic recycling systems

True to our slogan *Engineers of progress*, we engineer handling machines, which embody innovative design, thought through to the smallest detail, uncompromising quality and superior performance in continuous operation.

Together with our partners and clients we constantly push the progress of the recycling industry in terms of efficiency and sustainability. The latest proof for that is our Crosswire Extractor CWE-1200.

Additionally FMW offers solutions for bale breaking and any kind of conveyor technology.



Pulp



Paper



Energy



Recycling



Chipboard



Other industries



## Contact

FMW Förderanlagen GmbH  
3062 Kirchstetten 100  
Austria

T +43 (0) 2743 8245 0  
E [welcome@fmw.co.at](mailto:welcome@fmw.co.at)

[www.fmw.co.at](http://www.fmw.co.at)